

INSTALLATION *guide*



inteo *Telis 1 RTS / Telis 4 RTS*

The **Telis RTS** (single or four channels) is a hand-held transmitter compatible with all the **RTS receivers** and the **SL7070 range of products**. Commands are transmitted by radio (frequency 433.42 MHz).

1 Characteristics :

- Power: 3V lithium battery, CR 2430 type
- Protection index: IP 30
- Operating temperature: +5°C to +40°C
- Class III product
- Normally polluted environment

CE0165

Hereby, SOMFY declares that this equipment is in compliance with the essential requirements and other relevant provisions of Directive 1999/5/EC. A Declaration of Conformity is available at the web address www.somfy.com/Heading_CE

2 Programming :

A INITIAL INSTALLATION WITH AN ACCESSIBLE RTS RECEIVER

On the RTS receiver

- Press the PROG button until its LED lights. This indicates that for **one minute** the RTS receiver is ready to receive the address of the transmitter. After this time limit, the LED goes out.

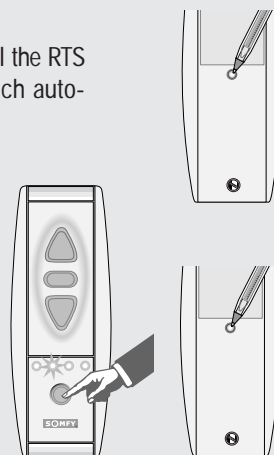
On the Telis RTS transmitter

Single channel transmitter :

- Press the programming button on the backside of the transmitter with a ball-point pen until the RTS receiver's LED blinks. The address of the transmitter is memorized by the RTS receiver which automatically quits its programming mode.

Four channels transmitter :

- Select the channel you wish to memorize in the RTS receiver by pressing the button on the front of the transmitter.
 - ⇒ the corresponding LED is blinking during 3 seconds (the channel is still memorized for 30s).
- Press the programming button on the backside of the transmitter with a ball-point pen until the motor module LED blinks. The address of the transmitter is memorized by the RTS receiver which automatically quits its programming mode.
- Repeat the same procedure for each channel you wish to assign in a RTS receiver memory, **especially the general channel (when the four LEDs are blinking).**



Memory capacity of a motor module : 16 channels maximum

You cannot assign more than 16 channels to a RTS receiver. If you try to enter a 17th, your instruction will be ignored, the receiver's led goes out.

B EXISTING INSTALLATION WITH A NON ACCESSIBLE RTS RECEIVER

On a control already memorized in the RTS receiver

- Press more than 2s the programming button on this control with a ball-point pen : the LED of the control flashes, indicating that the motor modules which have the address of this control are in their programming mode for one minute.

On the Telis RTS transmitter

Repeat the same procedure described in the **chapter A**.

Single channel transmitter :

- Press the programming button on the backside of the transmitter.

Four channels transmitter :

- Select the channel you wish to memorize in the RTS receiver.
- Press the programming button on the backside of the transmitter.

C DELETE A CHANNEL FROM THE RTS RECEIVER MEMORY

To delete a channel of a transmitter from a RTS receiver, carry out the same procedure as described in **chapter A** :

Set the RTS receiver in its programming mode, then select the channel you wish to delete on the transmitter and press the prog button of the transmitter (the concerned channel will be unprogrammed from the RTS receiver's memory).

D ERASE THE MEMORY OF A RTS RECEIVER

Press the module programming button for approximately 10 seconds until the LED flashes.

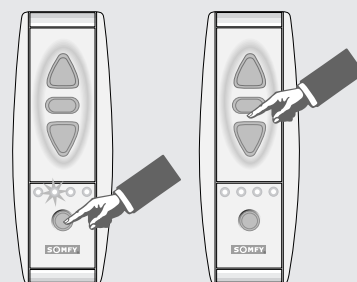
3 Using :

Telis 1 RTS : Single channel transmitter :

- Press the UP ; DOWN or STOP button.
- ⇒ the programmed RTS receivers are activated.

Telis 4 RTS : Four channels transmitter :

- Select the channel of the motor module you wish to control.
- ⇒ the corresponding LED is blinking during 3 seconds (the channel is still memorized for 30s and then the transmitter returns to channel 1).
- Press the UP ; DOWN or STOP button.
- ⇒ the programmed RTS receivers are activated.



Battery life

The transmitters are fitted with a 3V battery (type 2430) which provides about 3 years operation assuming 4 operations per day. When the battery becomes discharged, the control LED no longer lights up when a command is sent, and the command is not carried out. The module has an integrated backup control under the programming button (see page 1). It operates by successive presses: raising, stop, lowering, stop ...

How to change the battery

- Remove the back cover of the transmitter with a screwdriver.
 - Slide the battery out of its house by pushing it with a screwdriver.
 - Insert the new battery.
- Rem : Do not throw the empty battery anyway (put it in a special expected place).

