

# Users Manual

VP4910

REMOTEPOINT®  
**JADE**  
PRESENTATION REMOTE



  
INTERLINK  
ELECTRONICS

## **FCC Certification**

This device complies with Part 15 of the FCC Rules.

Operation is subject to the following two conditions: (1) This device may not cause harmful interference, and (2) This device must accept any interference received, including interference that may cause undesired operation.

This equipment has been tested and found to comply with the limits for a CLASS B digital device, pursuant to Part 15 of the FCC rules. These limits are designed to provide reasonable protection against harmful interference when the equipment is operated in a residential installation. This equipment generates, uses, can radiate radio frequency energy and if not installed and used in accordance with the instruction guide, may cause harmful interference to radio communications. However, there is no guarantee that this radio interference will not occur in a particular installation. If this equipment does cause harmful interference to radio or television reception, which can be determined by turning the equipment on and off, the user is encouraged to try to correct the interference by one or more of the following measures:

Re-orient or relocate the receiving antenna.

Increase the separation between the equipment and the receiver.

Consult the dealer or an experienced Radio-TV technician for help.

Notice: Any changes or modifications not expressly approved by the party responsible for compliance could void the user's authority to operate the equipment. Extension cables are not recommended, if used, they must be shielded in order to comply with the emission limits.

## **IC Certification**

The term "IC" before the certification/registration number only signifies that the Industry Canada technical specifications were met.

## **Declaration of conformity**

Manufacturer: Interlink Electronics, Inc.  
546 Flynn Road  
Camarillo, CA 93012

Hereby, Interlink Electronics, Inc. declares that the VP4910 is in compliance with the essential requirements and other relevant provisions of Directive 1999/5/EC.

EMC/EMI/Safety Standards:

EN 300 440-2 V1.1.1 (2001-09)

EN 301 489-1 V1.4.1 (2002-08)

EN 301 489-3 V1.4.1 (2002-08)

EN 60825-1 (1994, A11:1996, A2:2001)



# Introduction

## Overview

Congratulations on your purchase of the VP4910 RemotePoint™ Jade Green Laser Presentation Remote. The VP4910 offers full 360° mouse control with patented click-trigger support, programmable buttons, and the brightest laser in its class.



## Installation

### Adding or Changing Batteries

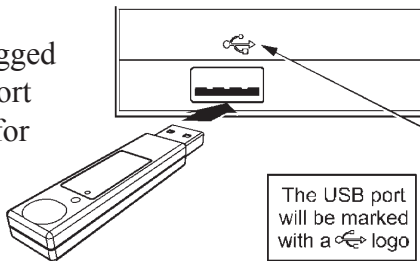
Open the battery compartment by pressing down on the latch. Insert the batteries per the diagram on the remote. Standard AA alkaline batteries are recommended.

### Using the USB Base Station

An optional USB Base Station is provided for fixed installations. To use the USB Base Station, plug the USB cable into a free USB port on your computer and plug the USB receiver into the USB port in the center of the USB Base Station. To achieve maximum range and performance, experiment with the orientation and position of the USB Base Station until satisfied.

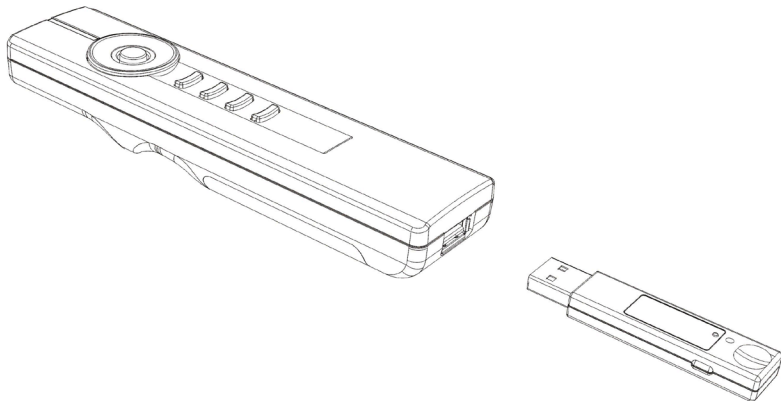
### Use the Receiver Directly

The receiver can also be plugged directly into any free USB port on your computer or laptop for immediate use.

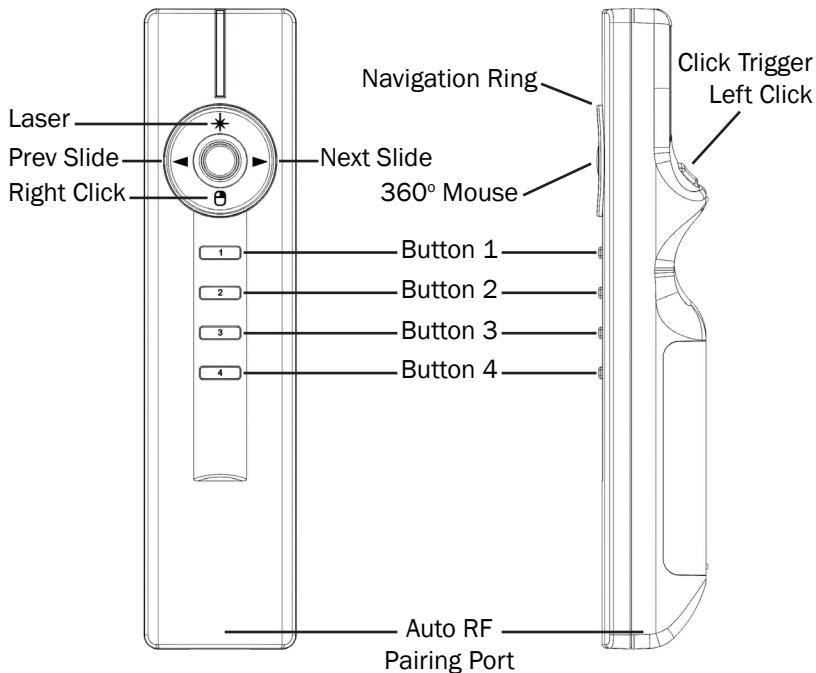


## Pairing the Receiver

The receiver and remote come pre-paired at the factory. The remote will automatically adjust frequencies and channels to ensure reliable communication. Should you have any problem with communication, you can re-pair them by plugging the USB receiver into the AutoRF Port on the back of the remote.



# Familiarizing Yourself with the Controls




# Default Control

## Mouse Control

Move the 360 degree mouse by moving the mouse button in the center of the navigation ring in the direction you wish to move.

**Left Click:** Use the button on the Click-Trigger™ on the bottom of the remote.

**Right Click:** Use the bottom button on the navigation ring to right click. 

## Presentation Controls

✳ Laser

◀ Previous Slide

▶ Next Slide


Button 1: Next Slide

Button 2: Previous Slide

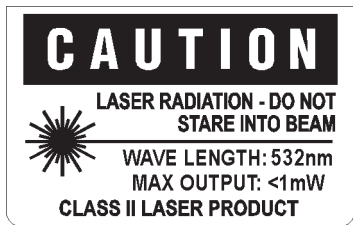
Button 3: Start Presentation

Button 4: Blank Screen

## Using the Laser Pointer

Press the button  on the top of the ring to activate the laser pointer. The laser pointer can be used to highlight important points on slides and graphs.

Because the laser emits a green beam it will appear much brighter than a standard laser beam.



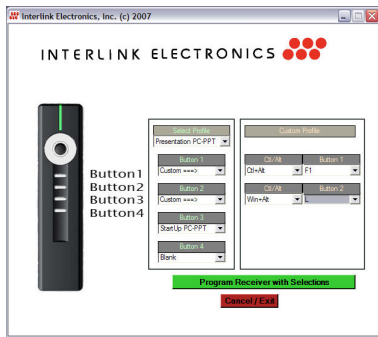
## Using the Base Station

For permanent installations, the VP4910 comes with an optional base station. To use the base station, plug the USB cable into the USB port on your computer. The receiver plugs into the USB port in the center of the base station. Best results are achieved when the receiver is unobstructed and pointed towards the presenter or podium.

## Custom Programming VP4910 Remote

The four buttons on the bottom of the VP4910 can be programmed to send a wide variety of keystrokes. The software is available online at <http://www.interlinkelectronics.com/support/downloads.html>

The remote can also be programmed to meet your own needs. To change the functions of the remote, select individual keys from the drop down menu. Once you have made your selection click “Program Receiver.”



Once programmed, the changes are written to non-volatile memory on the receiver.

Once programmed those buttons will send those keys even on machines that aren't running the setup utility software

## Product Specifications

Laser:	532 nm Green Class II Laser
Range:	150 ft Omni-Directional Range
Frequency:	Auto RF 64k unique addresses 2.4 GHz Radio Frequency
Features:	Full 360° Mouse PowerPoint Slide Control 4 Programmable Buttons
Battery Type:	2 x AA Batteries
Size:	38 mm (W) x 160 mm (L) x 27.4 mm (H)

## System Requirements

Operation:	PC or Mac Available USB Port Microsoft PowerPoint® or Apple Keynote®
Programming:	Windows XP or Vista

## **For Product Support Please Contact**

546 Flynn Road  
Camarillo, CA 93012 USA

TEL 888 696 3500  
FAX 805 484 5997

[INTERLINKELECTRONICS.COM](http://INTERLINKELECTRONICS.COM)

## THANK YOU

Thank you for purchasing a VP4910 RemotePoint™ Jade Green Laser Presentation Remote. We know you had other choices and we appreciate that you chose Interlink Electronics for your wireless needs. So that we may better serve you in the future, please register online at [www.interlinkelec.com/register](http://www.interlinkelec.com/register).

Sincerely,



E. Michael Thoben  
President, Chairman and CEO  
Interlink Electronics, Inc.

## WARRANTY

30-Day Money Back Guarantee  
One Year, Limited Warranty

P/N 94-74889 Rev. B